



Step 1 - Display Assembly

- We are currently working on a better method to open the iPad. This method will open the iPad, but will almost certainly result in broken retaining clips.
- Insert a metal spudger between the top edge of the display assembly and the rear panel assembly.
- Rotate the spudger away from you to release the tabs along the top edge of the display.
- Insert a second metal spudger between the top edge of the display assembly and the rear panel assembly to keep the tabs from snapping back into place.



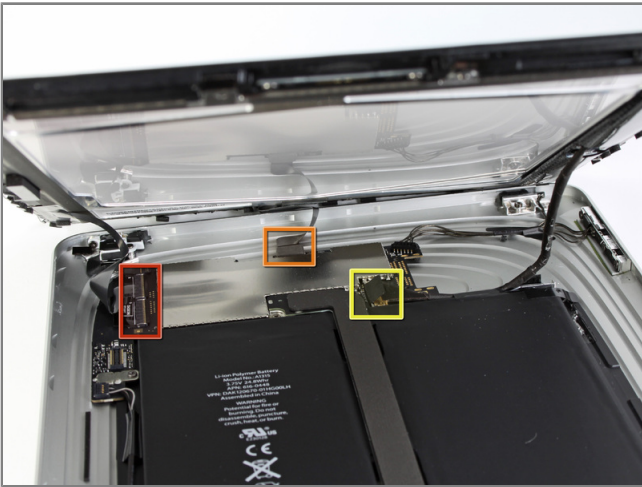
Step 2

- With one spudger, work your way along the right edge of the iPad, releasing tabs as you go.



Step 3

- Lift the display assembly away from the rear panel assembly by its right edge.
- Do not attempt to remove the display at this time, as it is attached to the rear panel assembly.



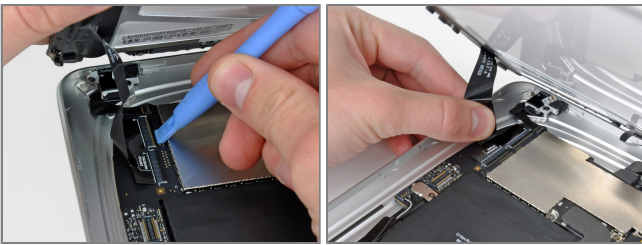
Step 4

- In the following steps, you will disconnect the three cables attaching the display assembly to the logic board. The cables are for the following components:
 - Digitizer
 - Ambient Light Sensor
 - Display Data Cable



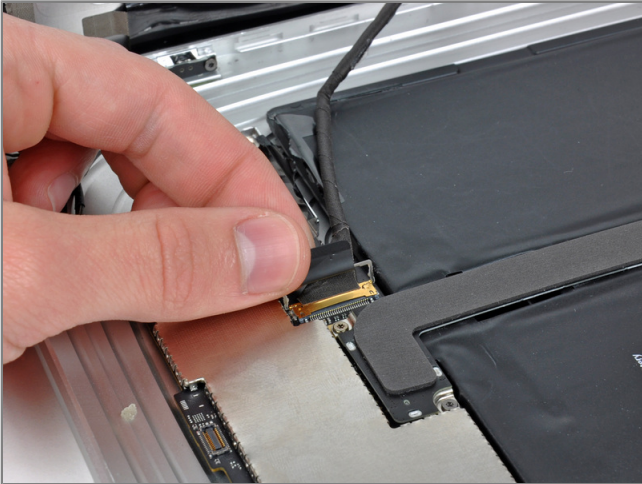
Step 5

- Use the edge of an iPod opening tool to flip up the retaining flaps holding the digitizer ribbon cables in their sockets on the logic board.
- Be sure you are flipping up the retaining flap, **not** the socket itself.
- Pull the digitizer ribbon cables straight out of their sockets.



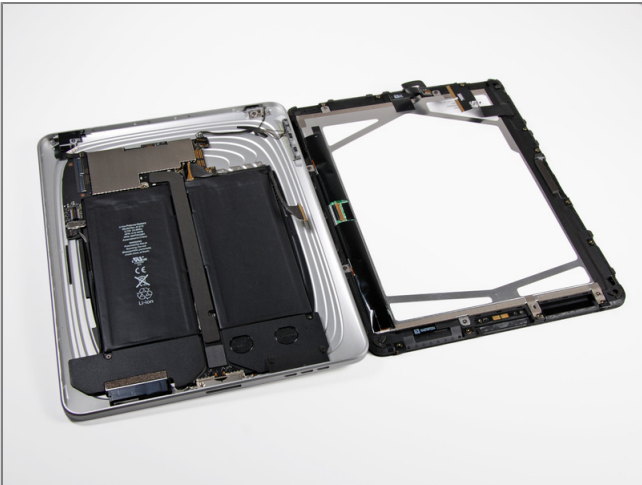
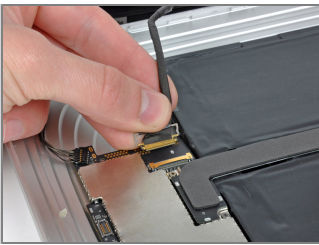
Step 6

- Use an iPod opening tool to remove the ambient light sensor connector from its socket by gently prying upward.



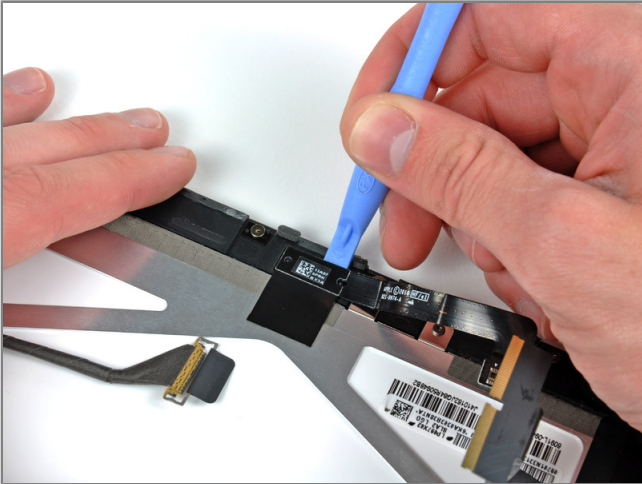
Step 7

- Disconnect the display data cable from the main board by flipping up the metal retainer by its black plastic pull tab.
- Pull the cable connector away from its socket.
- Pull the connector parallel to the face of the logic board.



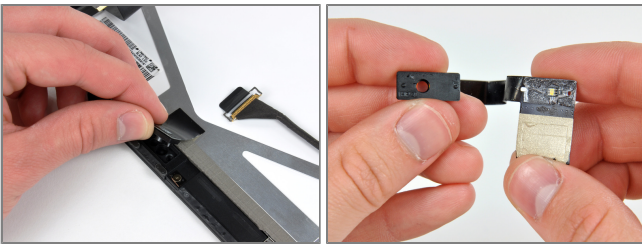
Step 8

- Remove the display assembly from the rear panel assembly.



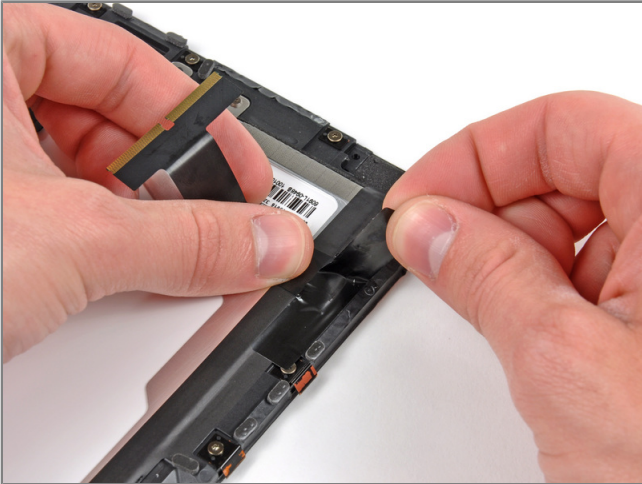
Step 9 - Ambient Light Sensor

- Use the edge of an iPod opening tool to carefully pry the ambient light sensor board off the adhesive securing it to the display frame.
- Once you've gained enough clearance, peel the ambient light sensor off the LCD.
- If necessary, attach the plastic view window to your new ambient light sensor before installation.



Step 10 - LCD

- If present, remove the strip of foam tape along the long edge of the display assembly near the digitizer cable.



Step 11

- While holding the digitizer cable down, carefully peel back the piece of tape connecting the digitizer cable to the display frame.



Step 12

- Remove the three T4 Torx screws securing the clips and LCD brackets covered in EMI tape near the home button switch.
- Carefully peel the display clip and its attached tape off the black plastic display frame.
- If you are replacing the LCD, be sure to transfer these pieces of EMI tape and their attached clips to the new LCD.





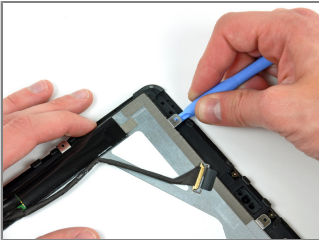
Step 13

- Remove the remaining T4 Torx screws securing the LCD to the black plastic display frame.



Step 14

- Insert the edge of an iPod opening tool under one of the ears attached to the steel LCD frame.
- Twist the iPod opening tool to gently pry the LCD up off the adhesive securing it to the front glass panel.
- Be sure not to excessively bend the LCD, as it is made of glass.





Step 15

- Repeat the process detailed on the previous step to pry up the display around the three sides opposite the digitizer cable side of the display.



Step 16

- Lift the LCD from its free end, and remove it from the display frame.
- Carefully peel the adhesive securing the long side of the LCD to the display frame, then remove the LCD.

